

# MARSTON UPDATE

## October 26<sup>th</sup>, 2020

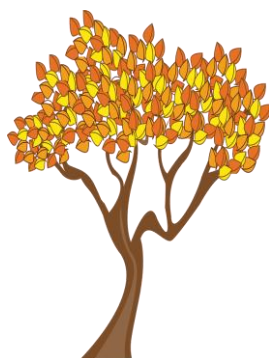
Hugh Deam  
Compiled by  
Donna Bennett  
Issue #171



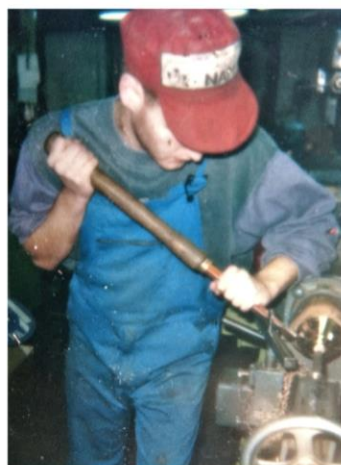
### THANK YOU AND FAREWELL

We would like to pass on our grateful thanks and a fond farewell to Christopher Moxon, for the last few years at St James, South Leigh, who has recently relocated back to his native Yorkshire. Besides his many quarter peals during the last couple of years in the W & W Branch he also within the last year rang quarters at Wolvercote and Marston (featured in Updates 109, 121 and 139). Also since the Covid shutdown he has contributed about the positive aspects of the Update (Issues 142, 145). He was greatly impressed by our body of work regarding outings and extent of ringing events and would have been joining us on this year's trips but for the shutdown.

Photo from 2018 at Bletchington shows him 2nd on the right.



Our handbell practice this week found us finally getting back up to St Clements, along with Little Bob Minor. We have been making good use of the books containing the collection of tunes loaned to us by Wolvercote, this week harmonising Twinkle Twinkle and Michael Row the Boat Ashore.



### Back in the Day Saturday 28th October 1989 Whitechapel Bell Foundry and London Towers

We filled two minibuses, driven by Brian Lowe and Len Porter, for this trip to the famed London foundry. A tour around the building, originally a coaching Inn known as "The Artichoke", included the opportunity to see work in progress as well as learn about its history. Then it was on to ringing at three well known 8-bell towers in the general vicinity, beginning with St Mary & Holy Trinity, Bow in the Road. The next famous city location was Christ Church, Spitalfields, then continuing westwards to St Botolph, Aldgate. Since that time this area has become synonymous with the signature skyscraper commercial edifices of the city and the church now has a 591ft neighbour in 30 St Mary Axe, but which is primarily known by its informal name -The Gherkin. With 6-bell towers rather sporadic in central London we concluded our ringing at Lane End in Buckinghamshire given its proximity to our return route.



Details and photos of other outings are available to view on City Branch Outings pages.

[www.oxfordcitybranch.org.uk/outings11.htm](http://www.oxfordcitybranch.org.uk/outings11.htm)